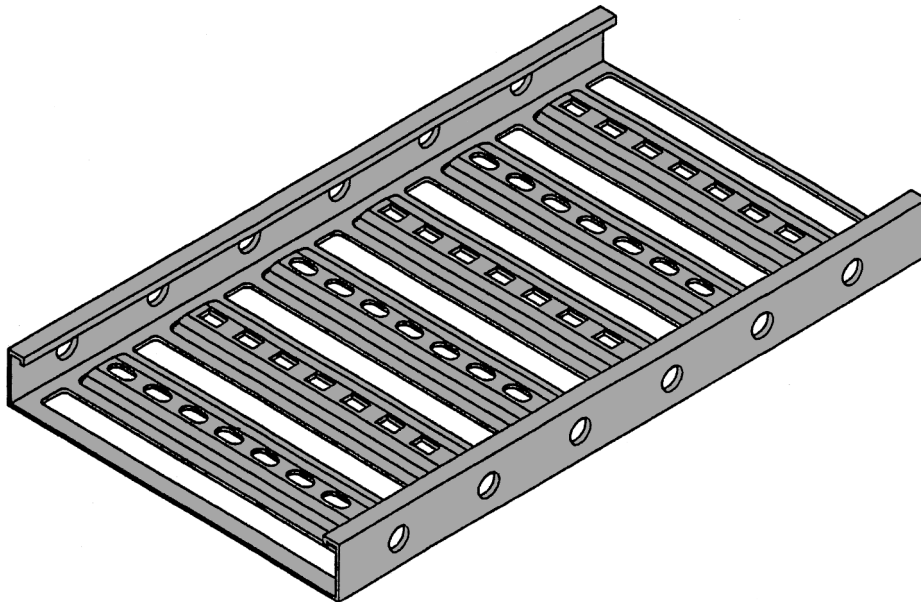
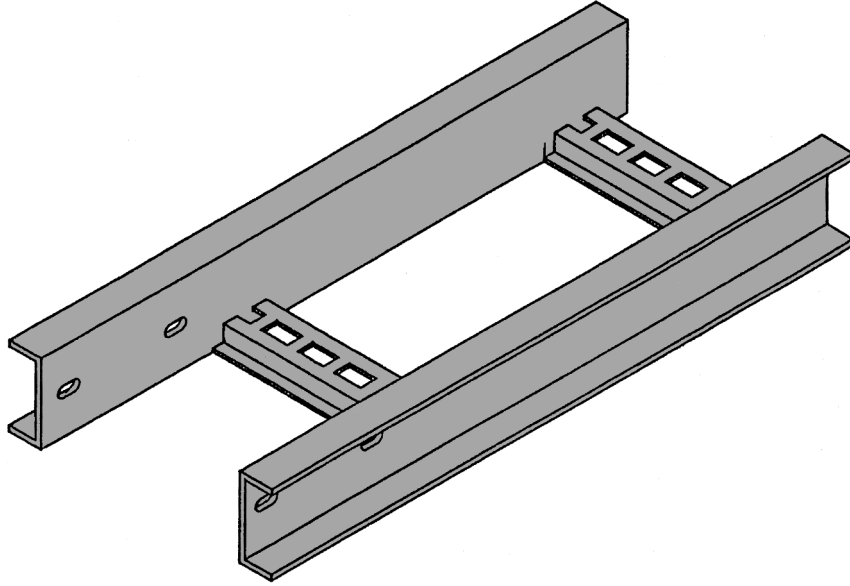


## SECTION 5

# Tray & Ladder Fittings

---

**WE ALSO HAVE AVAILABLE: A RANGE OF CABLE TRAY,  
CABLE LADDER AND CABLE SUPPORT ACCESSORIES**

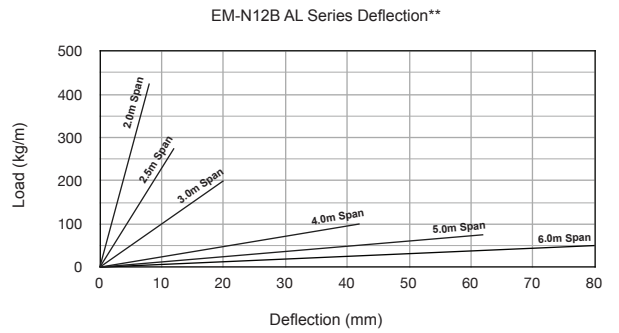
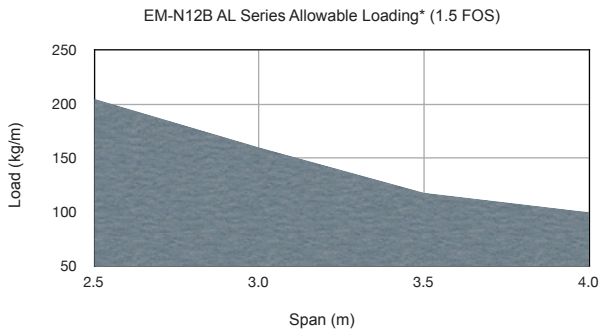
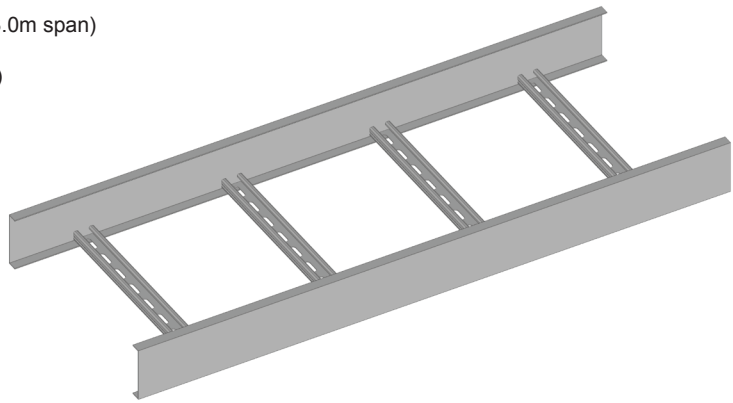


# EM-N12B Cable Ladder



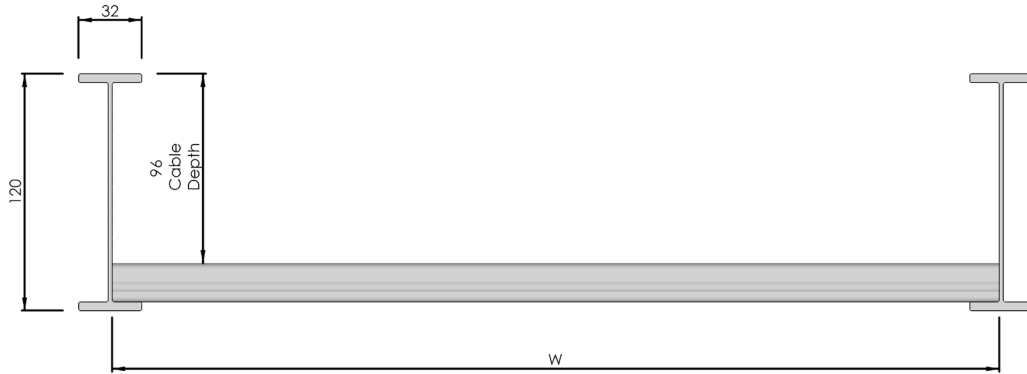
**Cable Laying Depth:** 86.5mm  
**Basic Load Capacity:** 180kg/linear m (3.0m span)  
**Standard Length:** 6.0m  
**Rung Spacing:** 300mm (nominal)  
**Material:** Aluminium

<b>Width "W" (mm):</b>	<b>Part Number:</b>
150	EM-N12B-150 AL
300	EM-N12B-300 AL
450	EM-N12B-450 AL
600	EM-N12B-600 AL
750	EM-N12B-750 AL
900	EM-N12B-900 AL



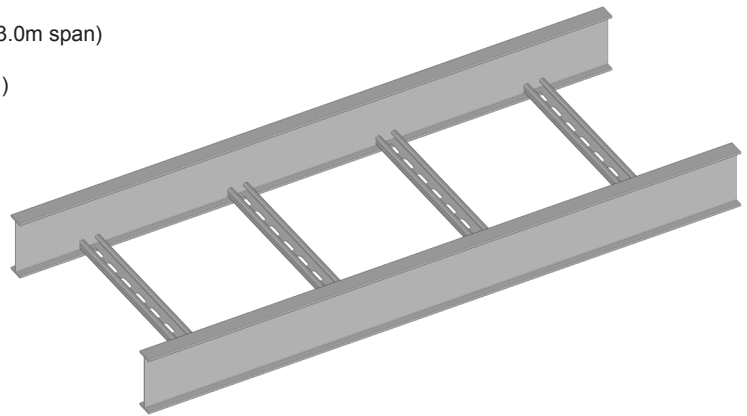
\*Allowable loads derived from the NEMA standard VE-1 and verified by testing.  
 \*\*Deflec□

# EM-N20A Cable Ladder

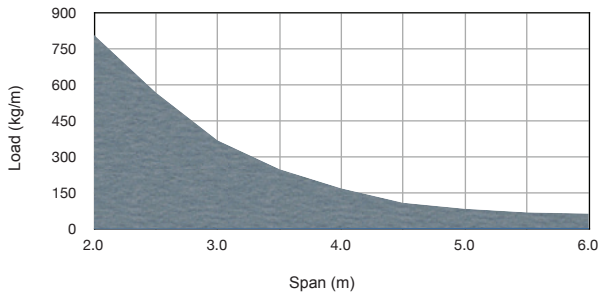


**Cable Laying Depth:** 96mm  
**Basic Load Capacity:** 282kg/linear m (3.0m span)  
**Standard Length:** 6.0m  
**Rung Spacing:** 300mm (nominal)  
**Material:** Aluminium

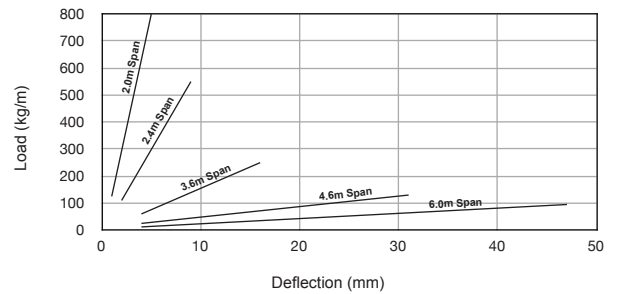
Width "W" (mm):	Part Number:
150	EM-N20A-150 AL
300	EM-N20A-300 AL
450	EM-N20A-450 AL
600	EM-N20A-600 AL
750	EM-N20A-750 AL
900	EM-N20A-900 AL



EM-N20A AL Series Allowable Loading\* (1.5 FOS)



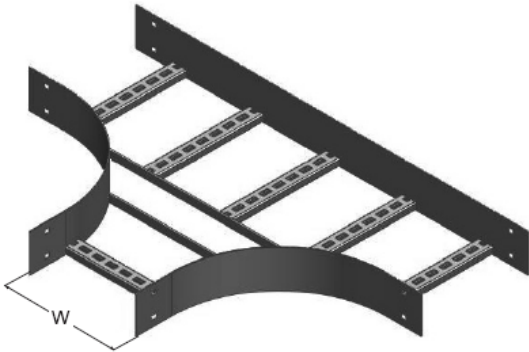
EM-N20A AL Series Deflection\*\*



\*Allowable loads derived from the NEMA standard VE-1 and verified by testing.

\*\*Deflec□

# Cable Ladder Accessories



Nema 3 fitting shown for illustration purposes only.  
The rung layout shown is typical and will vary on each fitting, depending on width and radius.

## Horizontal Tee:

Equal or Unequal

Width:

150, 300, 450, 600, 750, 900mm  
standard.

Other widths available on request



Nema 3 fitting shown for illustration purposes only.  
The rung layout is shown as typical and the rung quantity will vary on each fitting, depending on width and radius.

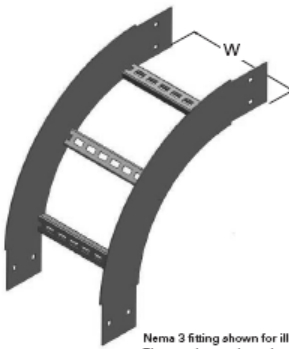
## Horizontal Bend:

45 degree or 90 degree

Width:

150, 300, 450, 600, 750, 900mm  
standard.

Other widths available on request



Nema 3 fitting shown for illustration purposes only.  
The rung layout shown is typical and will vary on each fitting, depending on width and radius.

## External Riser:

Width:

150, 300, 450, 600, 750, 900mm  
standard.

Other widths available on request



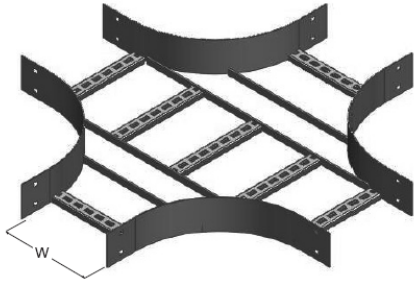
Nema 3 fitting shown for illustration purposes only.  
The rung layout shown is typical and will vary on each fitting, depending on width and radius.

## Internal Riser:

Width:

150, 300, 450, 600, 750, 900mm  
standard.

Other widths available on request



Nema 3 fitting shown for illustration purposes only.  
The rung layout shown is typical and will vary on each fitting, depending on width and radius.

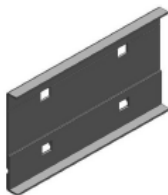
**Horizontal Cross:**

**Equal or Unequal**

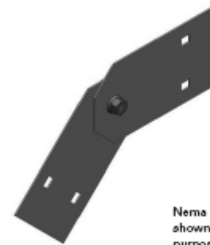
**Width:**

**150,300,450,600,750,900mm  
standard.**

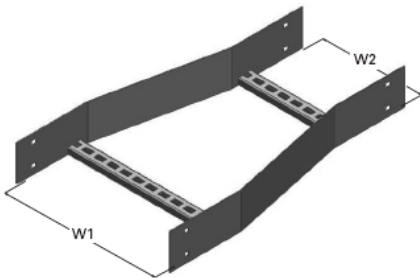
**Other widths available on request**



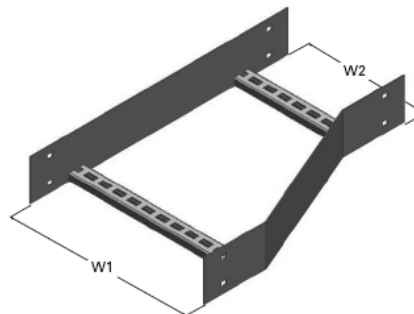
Nema 3 Splice shown for illustration purposes only.



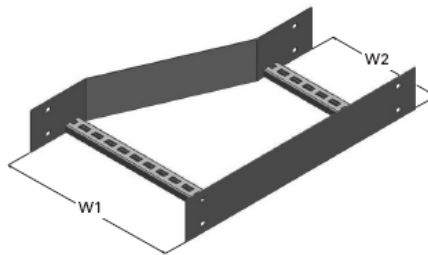
Nema 3 Vertical Splice  
shown for illustration  
purposes only.



Nema 3 fitting shown for illustration purposes only.



Nema 3 fitting shown for illustration purposes only.



Nema 3 fitting shown for illustration purposes only.

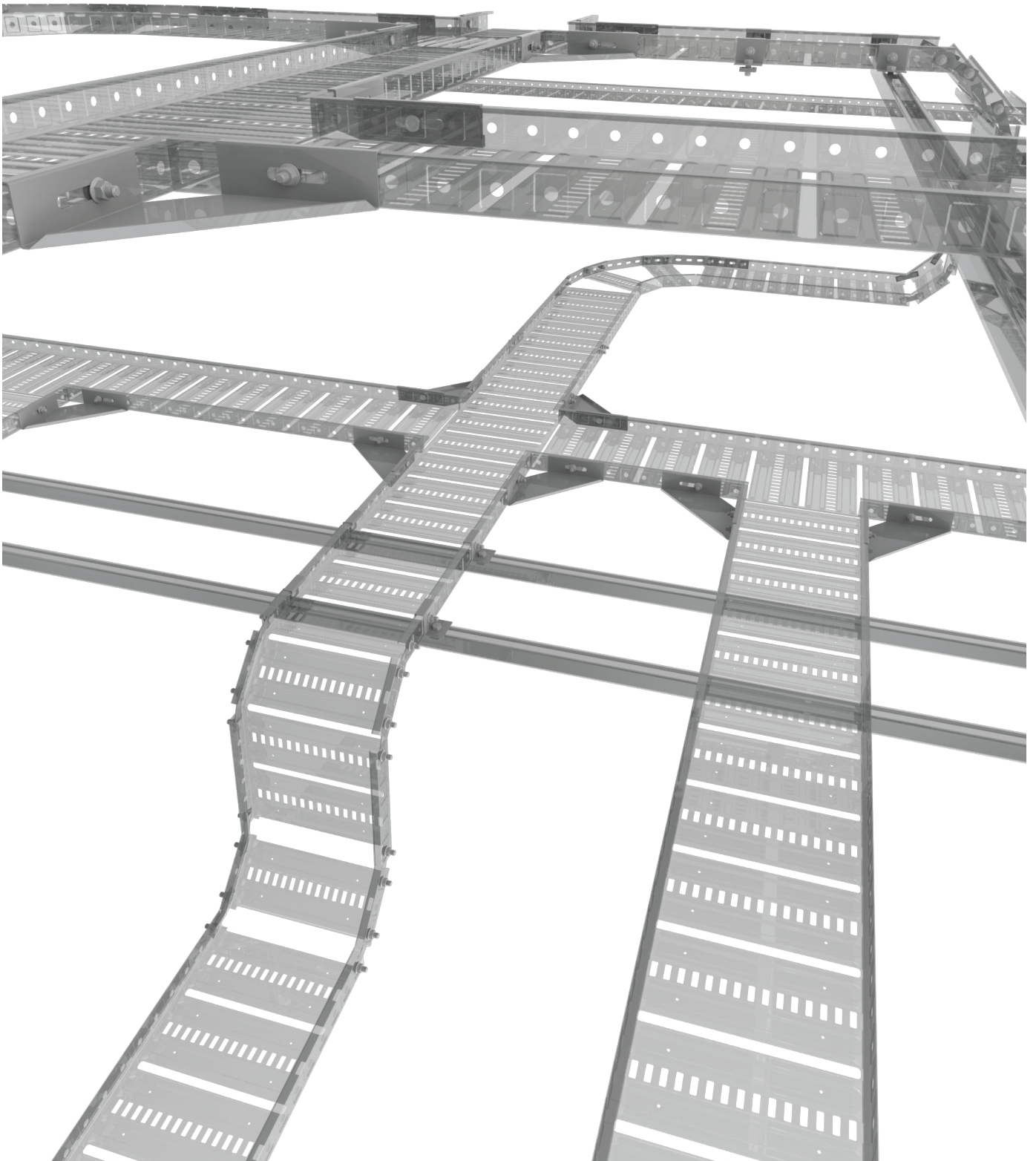
**Reducers:**

**Width:**

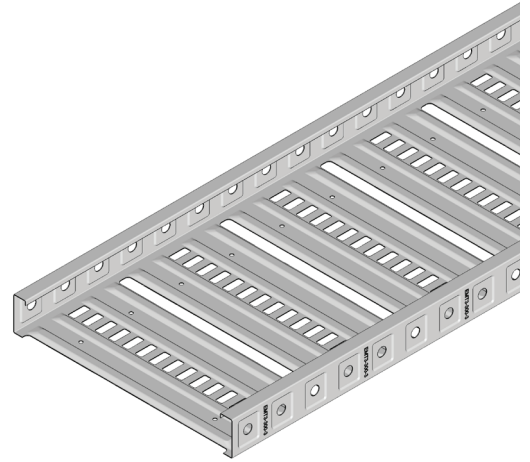
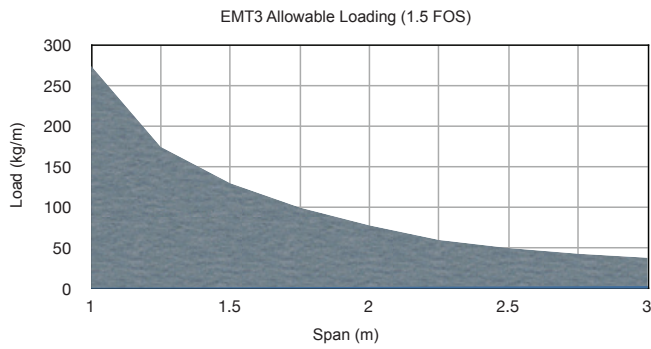
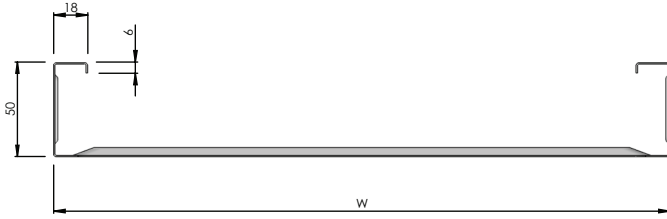
**150,300,450,600,750,900mm  
standard.**

**Other widths available on request**

# Cable Tray Section



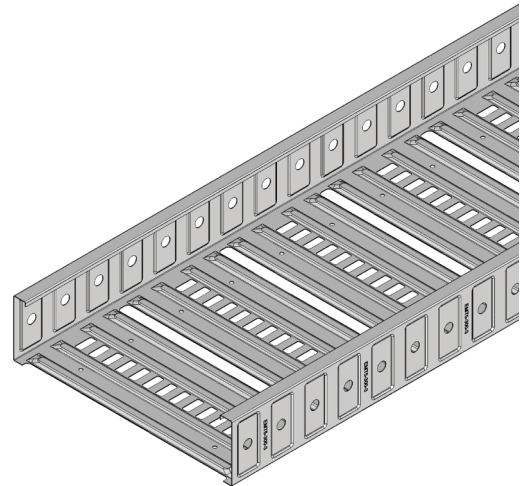
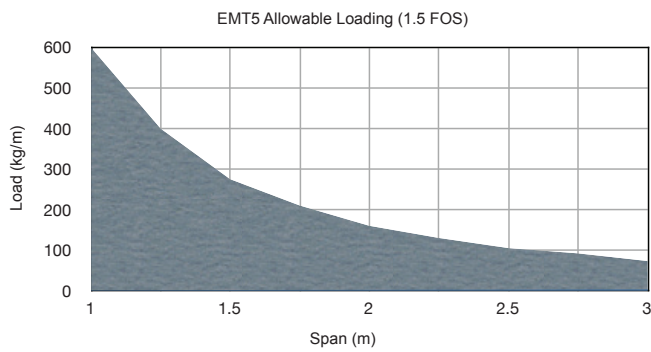
## EMT3 Cable Tray



Standard Length: 3.0m  
 Standard Finish: Galvanised  
 Cable Laying Depth: 45mm

**Width "W" (mm):** Part Number:  
 176 EMT3-150-3  
 326 EMT3-300-3  
 476 EMT3-450-3  
 626 EMT3-600-3

## EMT5 Cable Tray

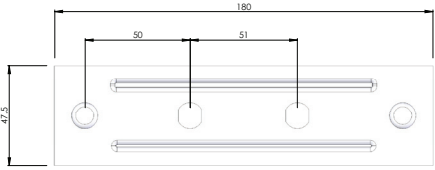


Standard Length: 3.0m  
 Standard Finish: Galvanised  
 Cable Laying Depth: 79mm

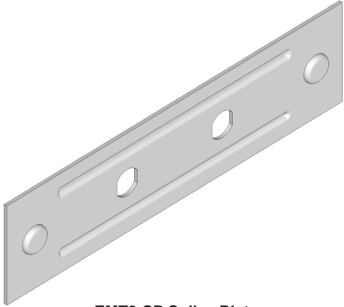
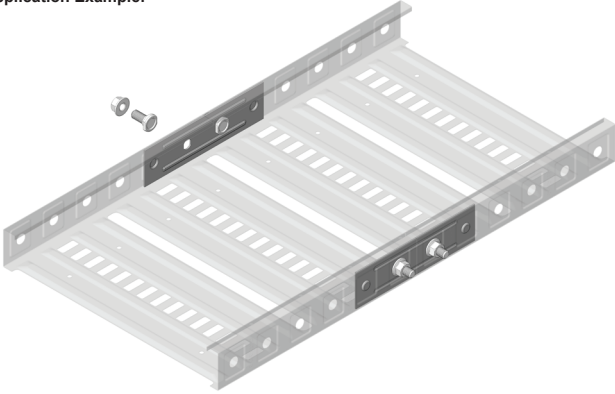
**Width "W" (mm):** Part Number:  
 176 EMT5-150-3  
 326 EMT5-300-3  
 476 EMT5-450-3  
 626 EMT5-600-3



EMT3-SP Splice Plate

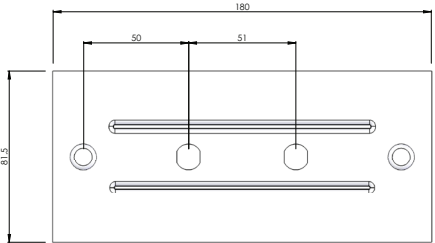


Application Example:

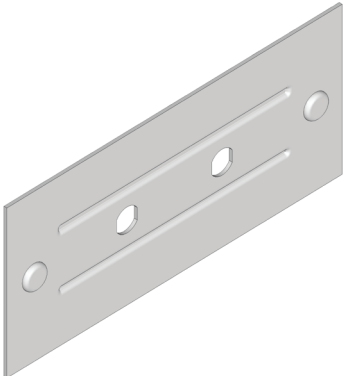
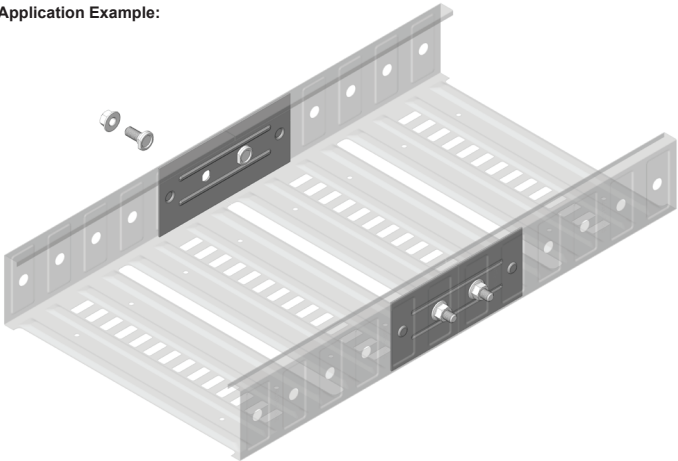


EMT3-SP Splice Plate

EMT5-SP Splice Plate

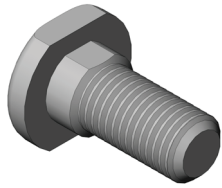


Application Example:

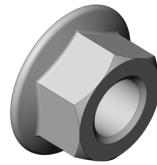


EMT5-SP Splice Plate

EMTB Bolt & EMTN Nut

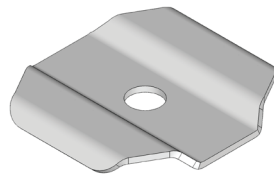
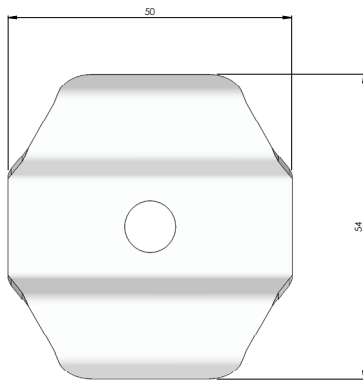


EMTB Bolt



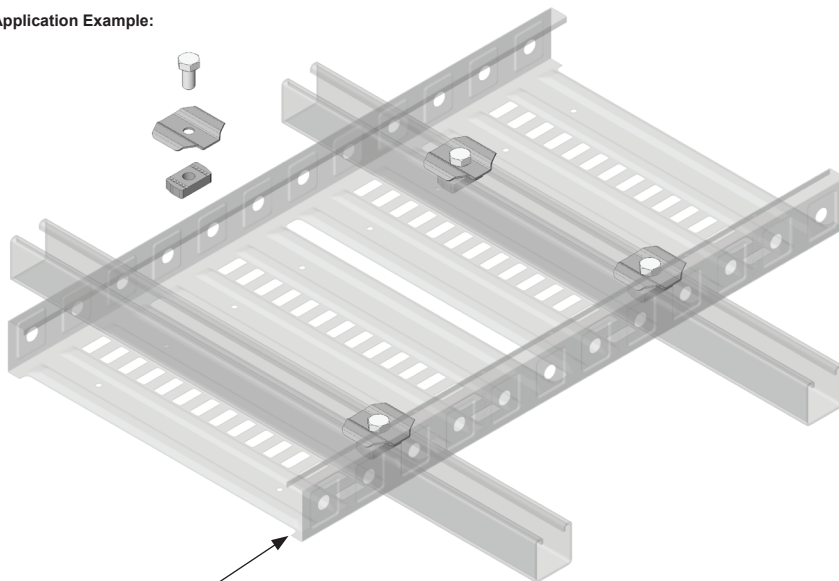
EMTN Nut

EMTS-HDW Hold Down Washer



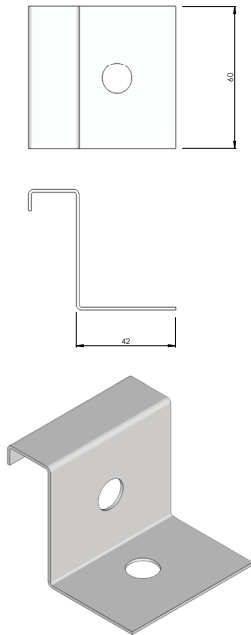
EMTS-HDW Hold Down Washer  
Suitable for EMT3 and EMT5 Series Cable Tray

Application Example:



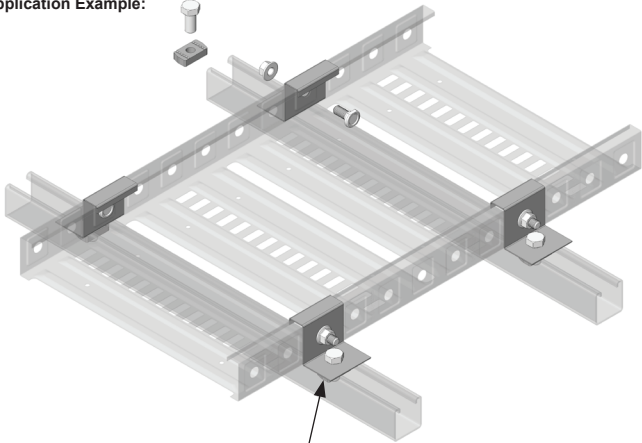
Hold Down Washers can be used on  
EMT3 and EMT5 Series Cable Tray

EMT3-HDB Hold Down Bracket



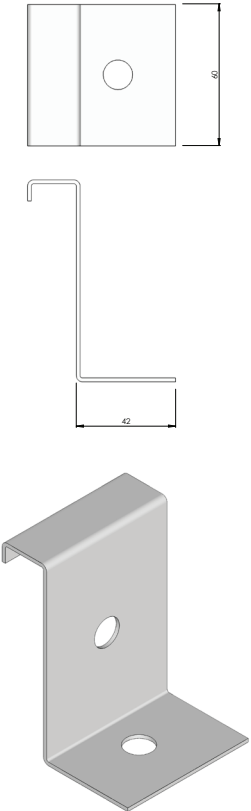
EMT3-HDB Hold Down Bracket

Application Example:



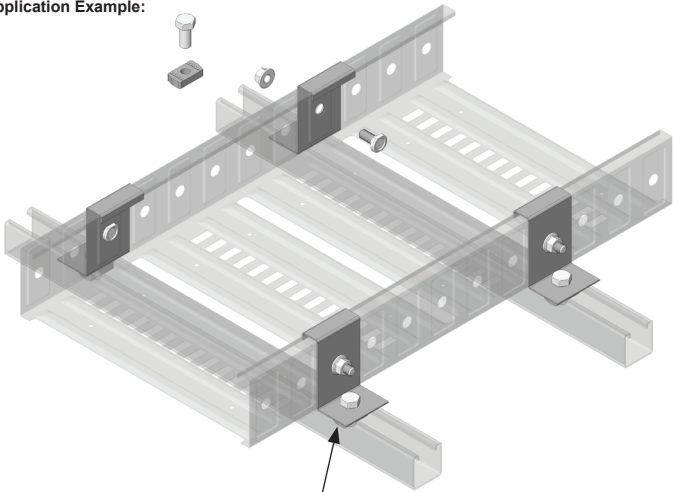
Hold Down Bracket can be fastened to channel, walls, floors, ceilings etc

EMT5-HDB Hold Down Bracket



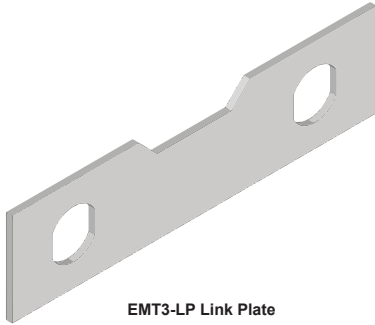
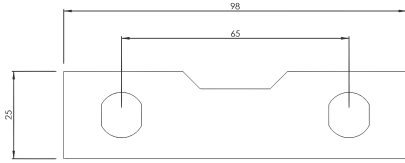
EMT5-HDB Hold Down Bracket

Application Example:



Hold Down Bracket can be fastened to channel, walls, floors, ceilings etc

## EMT3-LP Link Plate

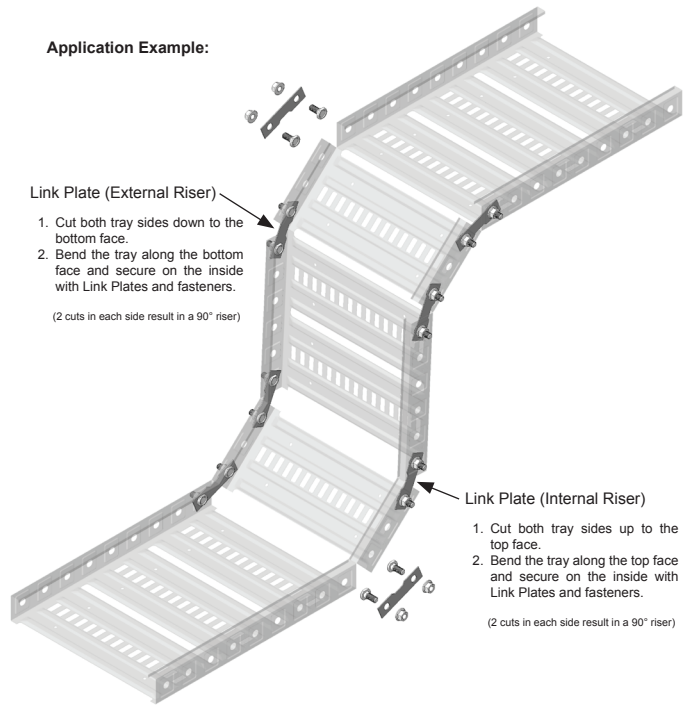


EMT3-LP Link Plate

### Application Example:

#### Link Plate (External Riser)

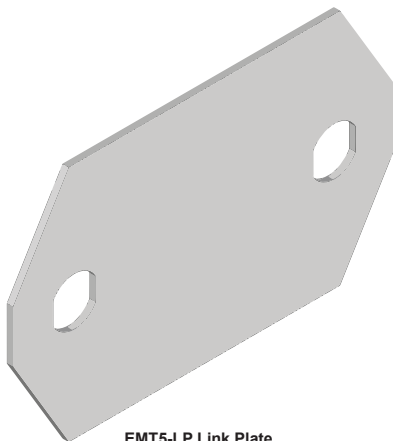
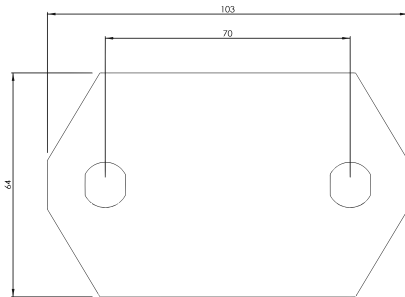
1. Cut both tray sides down to the bottom face.
  2. Bend the tray along the bottom face and secure on the inside with Link Plates and fasteners.
- (2 cuts in each side result in a 90° riser)



#### Link Plate (Internal Riser)

1. Cut both tray sides up to the top face.
  2. Bend the tray along the top face and secure on the inside with Link Plates and fasteners.
- (2 cuts in each side result in a 90° riser)

## EMT5-LP Link Plate

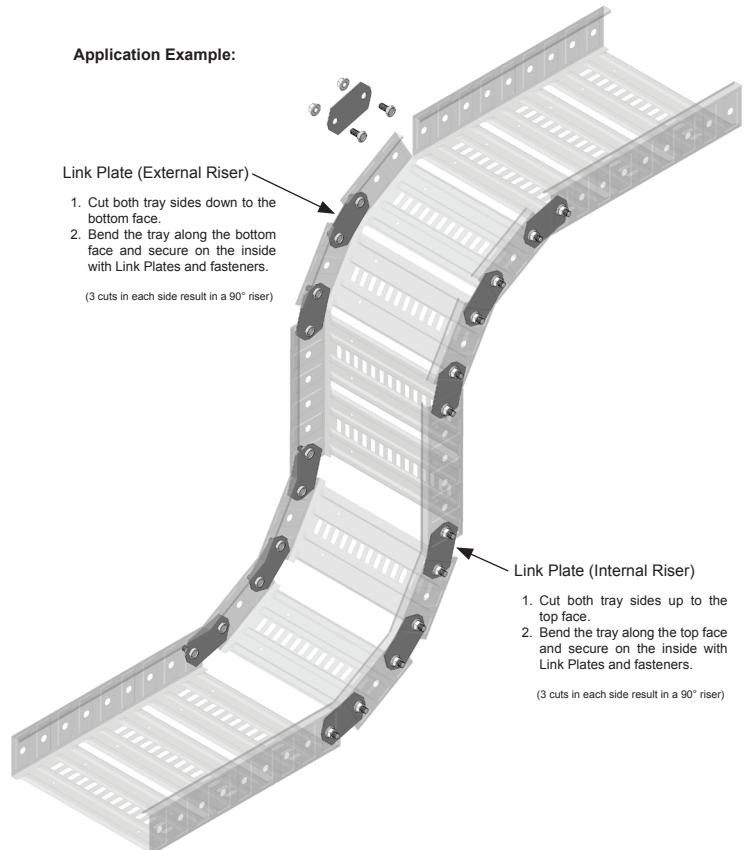


EMT5-LP Link Plate

### Application Example:

#### Link Plate (External Riser)

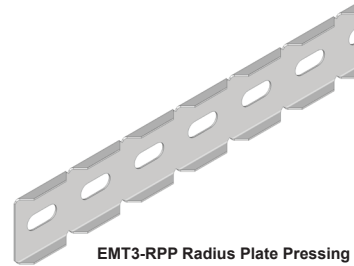
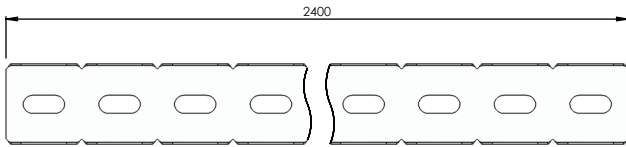
1. Cut both tray sides down to the bottom face.
  2. Bend the tray along the bottom face and secure on the inside with Link Plates and fasteners.
- (3 cuts in each side result in a 90° riser)



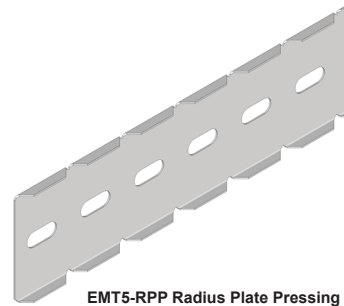
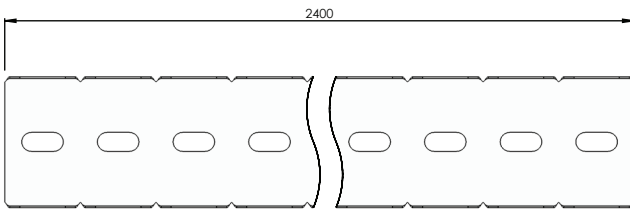
#### Link Plate (Internal Riser)

1. Cut both tray sides up to the top face.
  2. Bend the tray along the top face and secure on the inside with Link Plates and fasteners.
- (3 cuts in each side result in a 90° riser)

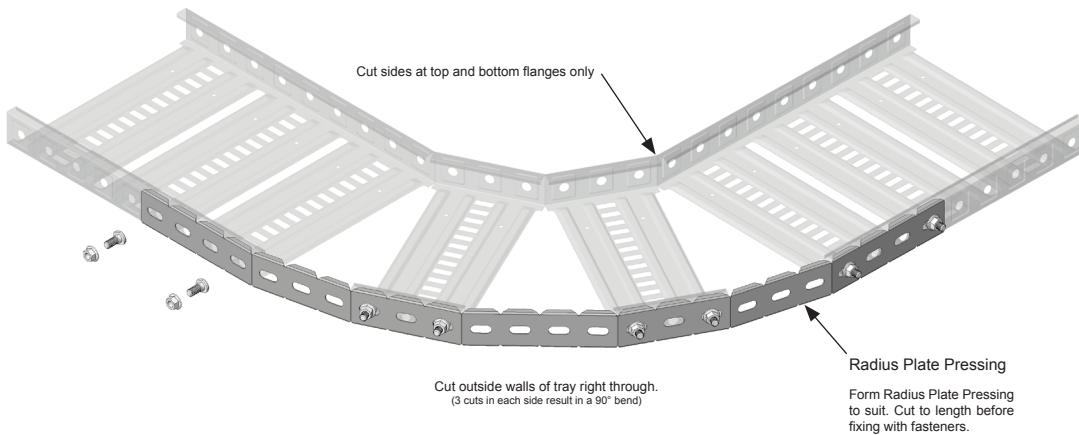
## EMT3-RPP Radius Plate Pressing



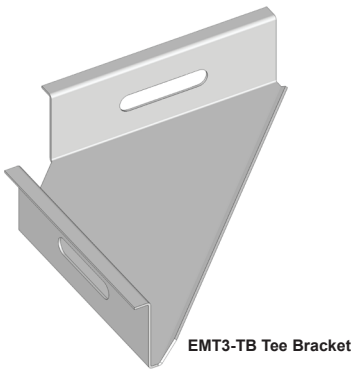
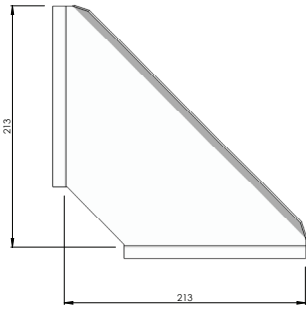
## EMT5-RPP Radius Plate Pressing



### Application Example:

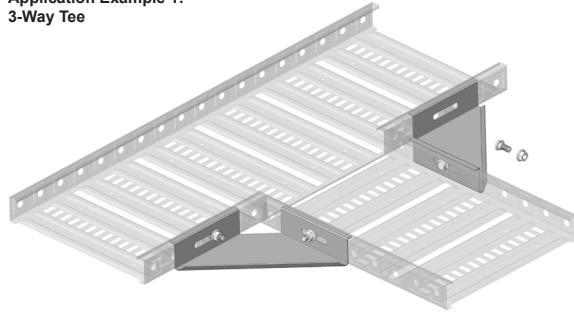


## EMT3-TB Tee Bracket

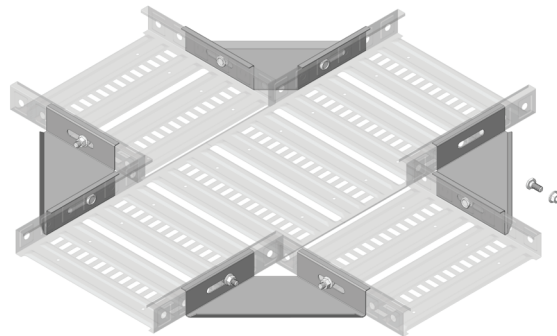


EMT3-TB Tee Bracket

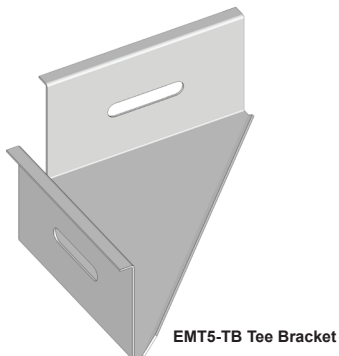
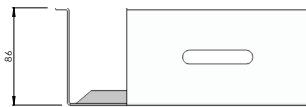
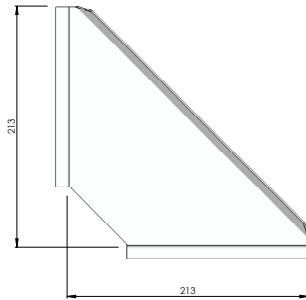
Application Example 1:  
3-Way Tee



Application Example 2:  
4-Way Cross

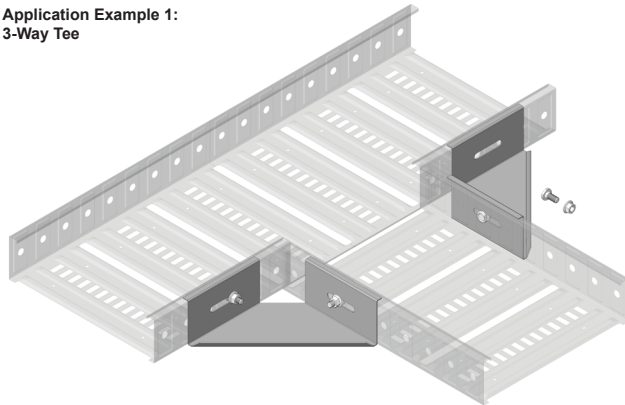


## EMT5-TB Tee Bracket

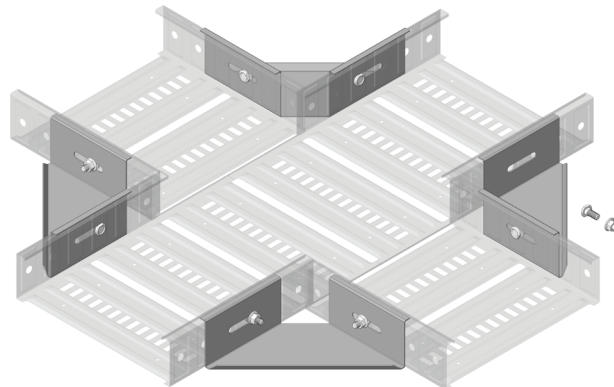


EMT5-TB Tee Bracket

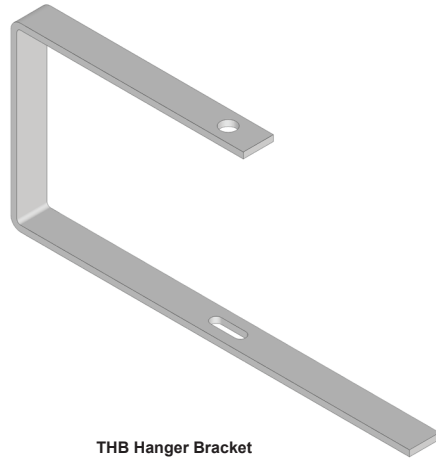
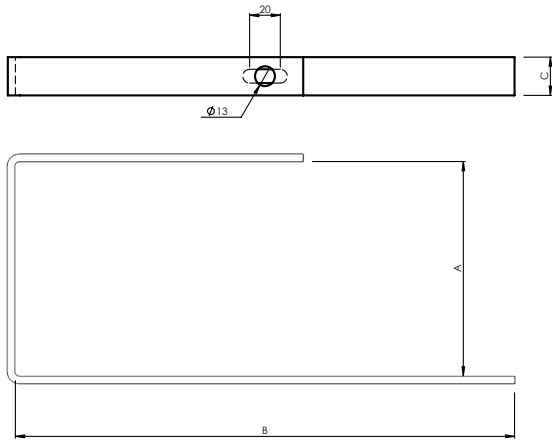
Application Example 1:  
3-Way Tee



Application Example 2:  
4-Way Cross



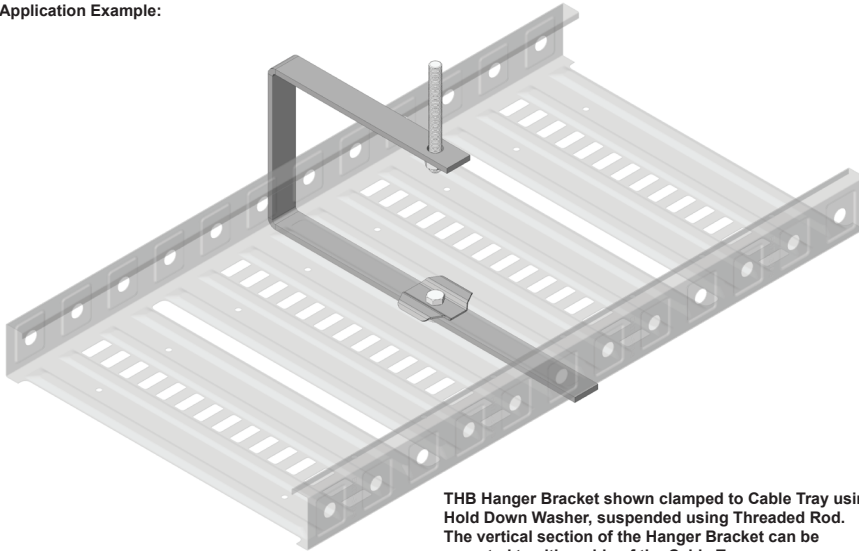
## THB Hanger Bracket



THB Hanger Bracket

Height "A" (mm):	Width "B" (mm):	Width "C" (mm):	Part Number:
140	125	25	THB100 PG
140	176	25	THB150 PG
140	225	25	THB200 PG
140	326	40	THB300 PG

### Application Example:



THB Hanger Bracket shown clamped to Cable Tray using Hold Down Washer, suspended using Threaded Rod. The vertical section of the Hanger Bracket can be mounted to either side of the Cable Tray.

(Hold Down Washer and Threaded Rod not included)

## Trapeze Kits

This system is designed to support various Cable Tray Systems and widths in suspended installations.

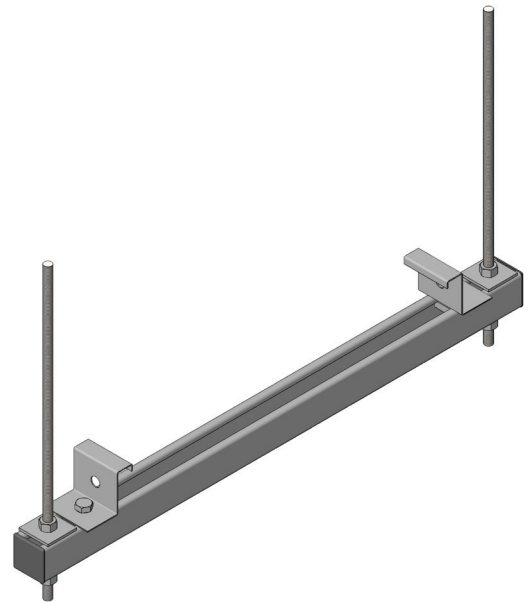
### Trapeze Kit contains (typical):

- 1 x Channel cut to length/punched
- 1 x M10 Threaded Rod (2m)
- 2 x FWSQM10 Flat Washers
- 6 x HN10 Hex Nuts
- 2 x EMTx-HDB Hold Down Brackets  
(or 1 x EMTS-HDW Hold Down Washer)
- 1 x SN08 Spring Nuts
- 2 x Channel End Caps

*Note* – Please specify Trapeze Kit finish at time of order:  
ie. TRP(S)300 (HDG)

- (PG) = Pre Galvanised (Indoor)
- (HDG) = Hot Dip Galvanised (Outdoor)
- (SS) = Stainless Steel (Corrosive)

(Trapeze Kit material orders will be supplied bulk with no pre-assembly)



Standard Duty				
Tray Width:	Channel Length:	Channel Type:	Max. Loading:	Part Number:
(mm)	(mm, +/-2mm)	(41 x 41 x 2.5mm)	(kN)	(S) = Standard
150	360	EM1000	14.44	TRP(S)150
300	510	EM1000	12.05	TRP(S)300
450	660	EM1000	7.48	TRP(S)450
600	810	EM1000	4.58	TRP(S)600

Medium Duty				
Tray Width:	Channel Length:	Channel Type:	Max. Loading:	Part Number:
(mm)	(mm, +/-2mm)	(41 x 41 x 1.6mm)	(kN)	(M) = Medium
150	360	EM2000	10.02	TRP(M)150
300	510	EM2000	7.12	TRP(M)300
450	660	EM2000	6.78	TRP(M)450
600	810	EM2000	5.38	TRP(M)600

Light Duty				
Tray Width:	Channel Length:	Channel Type:	Max. Loading:	Part Number:
(mm)	(mm, +/-2mm)	(41 x 22 x 2.5mm)	(kN)	(L) = Light
150	360	EM3300	5.41	TRP(L)150
300	510	EM3300	4.18	TRP(L)300
450	660	EM3300	2.70	TRP(L)450
600	810	EM3300	2.55	TRP(L)600

- Special Trapeze Kit sizes can be made on request
- Heavy Duty Kits can be supplied on request (EM5000/EM1001)
- End Caps supplied as standard, can be removed on request
- Top Fixings ordered separately
- SS Stainless Steel Trapeze Kits are made to firm order only - please note lead times apply
- All individual components of the Trapeze Kits can be supplied separately on request
- Trapeze Loadings based on uniform maximum channel safe beam working load per Trapeze Support (supported on both ends).